



BLOSSOM

AT SOMMERS BEND

PLAN 3

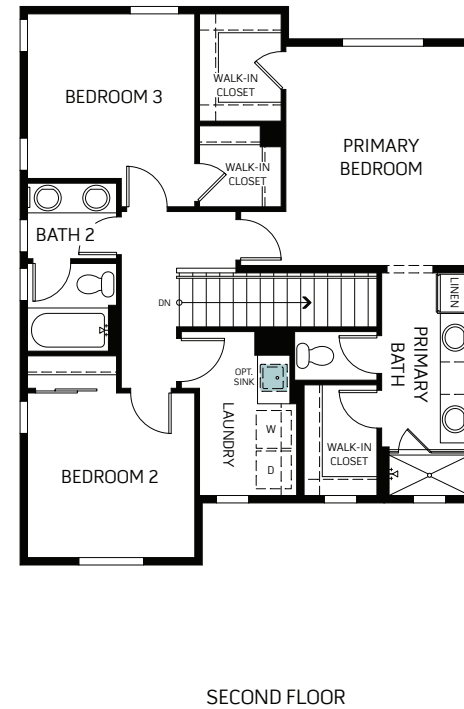
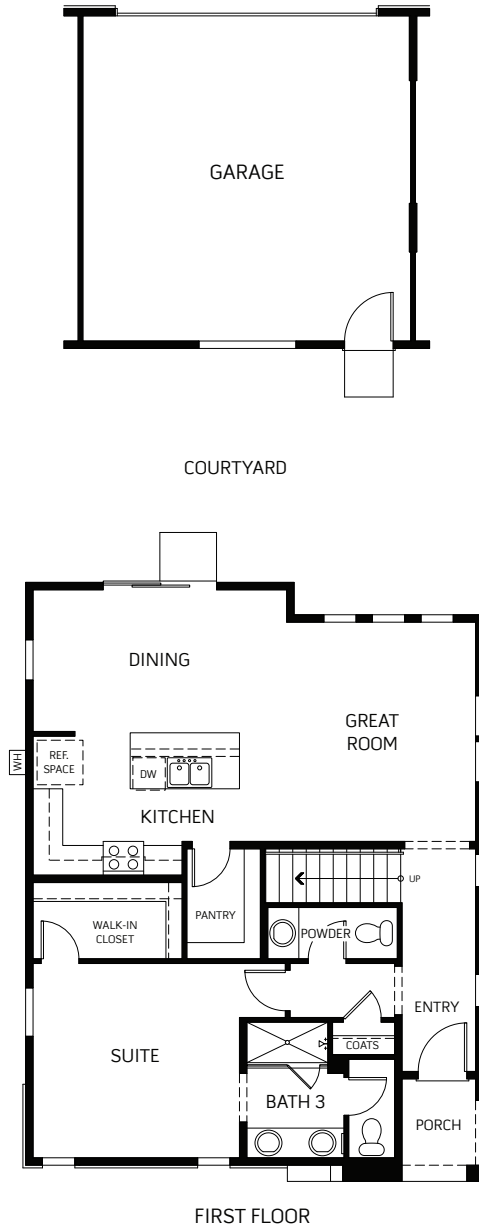


TWO STORY 1,845 SQ. FT.

PLAN 3

TWO STORY

1,845 Finished Sq. Ft. • 4 Bedrooms • 3.5 Baths



Woodside Homes reserves the right to change floor plans, features, elevations, prices, materials and specifications without notice. All square footages and measurements are approximate. Please see Sales Professional for full details. 06/2022

